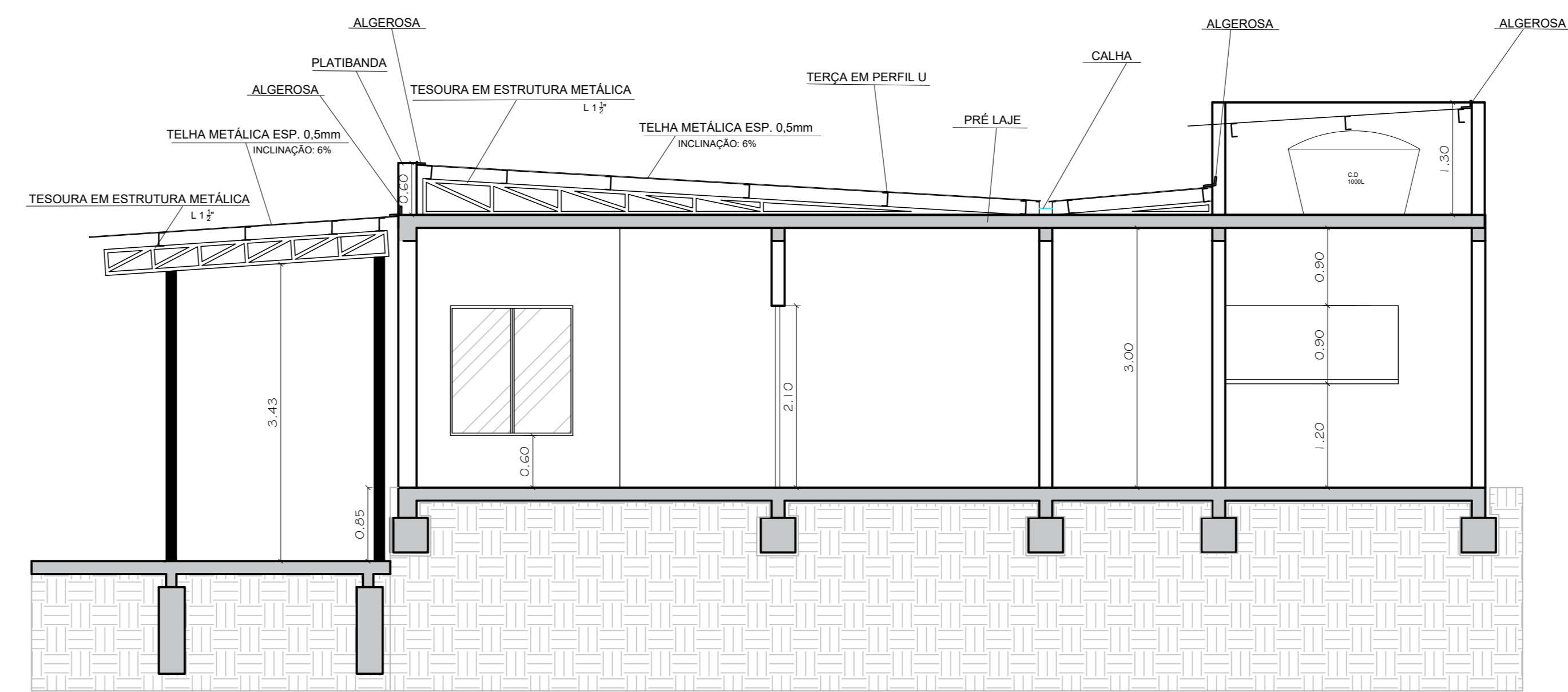
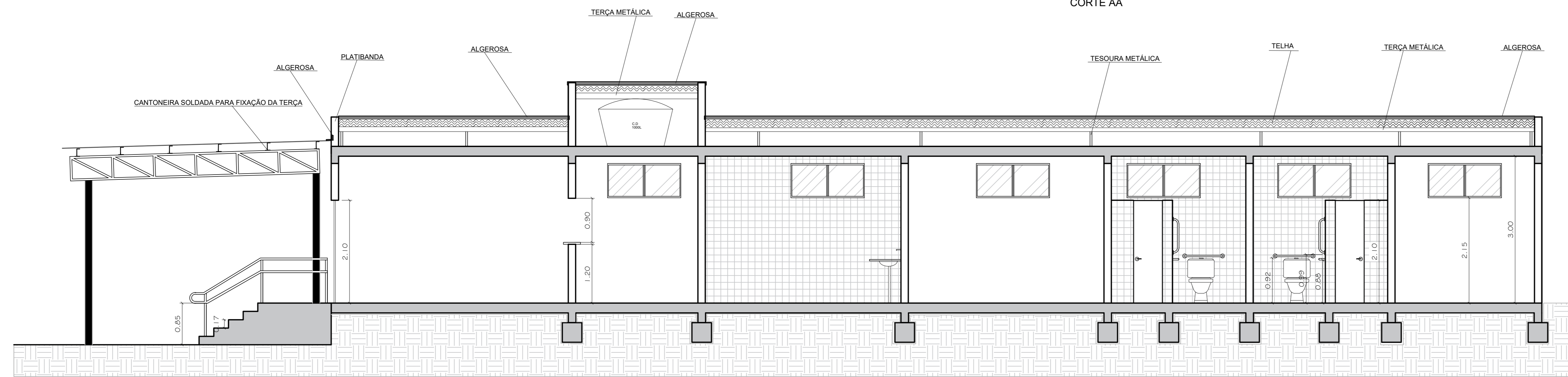




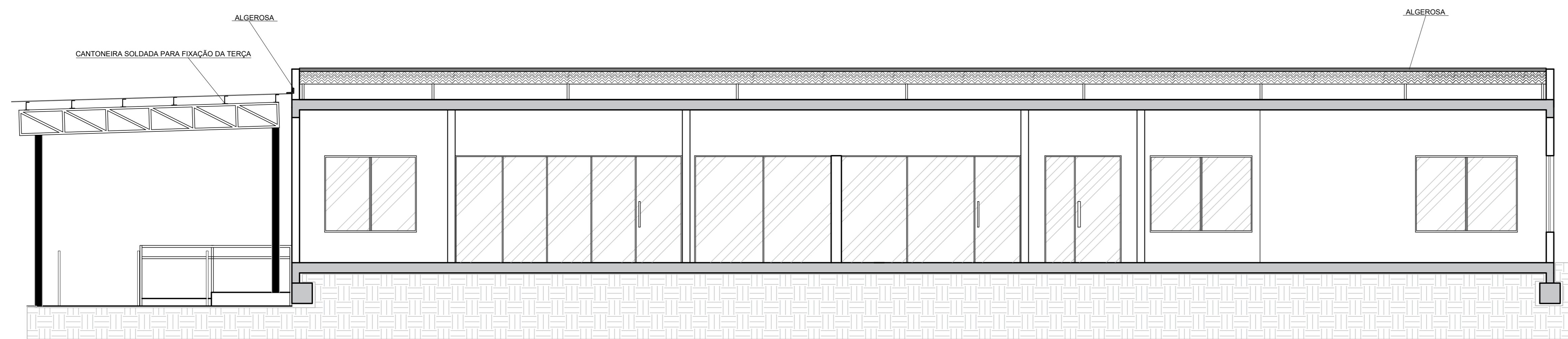
FACHADA OESTE



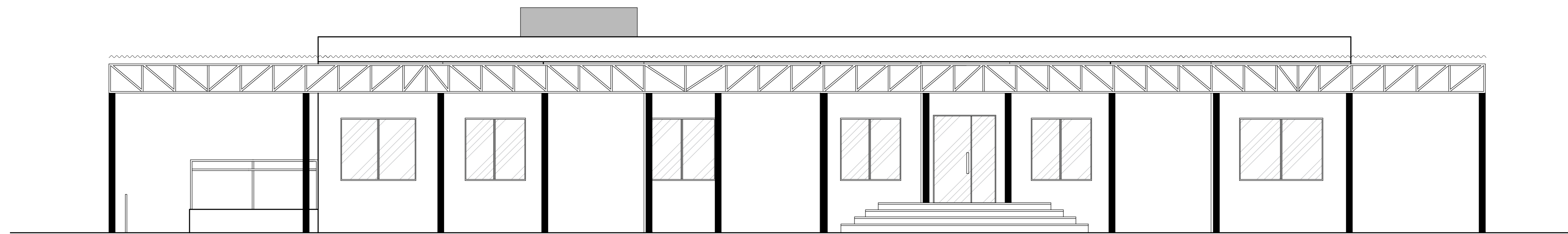
CORTE AA



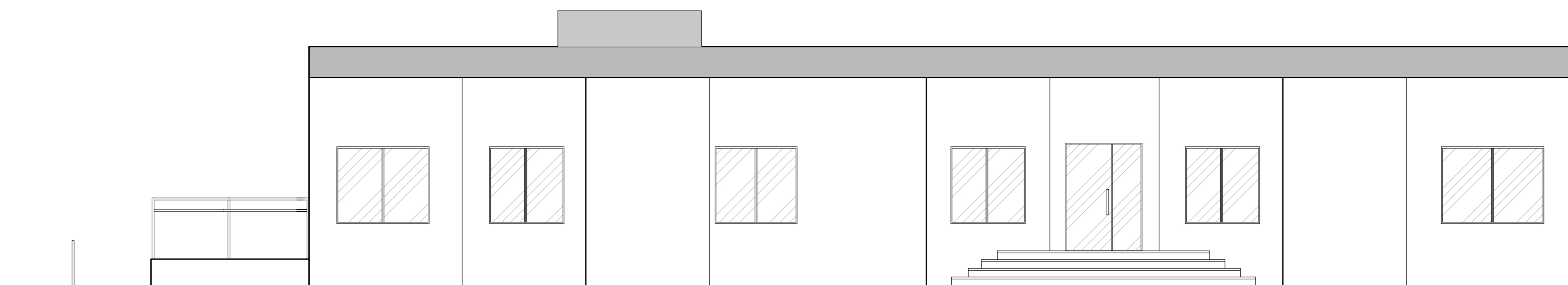
CORTE BB




CORTE CC



FACHADA SUL



FACHADA SUL SEM COBERTURA

 PREFEITURA MUNICIPAL DE HULHA NEGRA/RS DEPARTAMENTO DE ENGENHARIA E ARQUITETURA CNPJ: 94.702.784/0001-43		
TERMINAL RODOVIÁRIO		
OBRAS LOCAL: AVENIDA GETÚLIO VARGAS 1701 PRANCHA: FACHADAS E CORTES		
PREFEITO MUNICIPAL DE HULHA NEGRA CARLOS RENATO TEIXEIRA MACHADO SECRETÁRIO MUNICIPAL DE OBRAS, SERVIÇOS PÚBLICOS E TRÂNSITO	ENGENHEIRO CIVIL CARINA DA SILVA LEITZKE CREA-RS 213401 ENGENHEIRO CIVIL JOSÉ MAQUÊL DUARTE CREA-RS 172073 DESENHISTA RAISSA LEMOS DE QUADROS	PRANCHA: 02 ESCALA: 1/50 DATA: JULHO/2019
SECRETÁRIO MUNICIPAL DE ADMINISTRAÇÃO, PLANEJAMENTO E MEIO AMBIENTE ANTONIO HÉCTOR BASTIDE RAMOS		